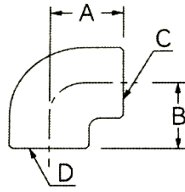
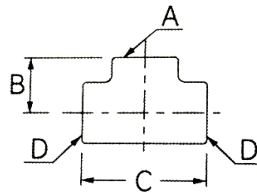


砲金エルボ



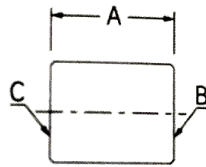
寸法	A	B	C	D
10	22	22	Rc3/8	Rc3/8
13	25	25	Rc1/2	Rc1/2
20	30	30	Rc3/4	Rc3/4
25	38	38	Rc1	Rc1
20×13	29	30	Rc3/4	Rc1/2
25×13	32	32	Rc1	Rc1/2
25×20	35	35	Rc1	Rc3/4
30	41	41	Rc1 1/4	Rc1 1/4
40	44	44	Rc1 1/2	Rc1 1/2
50	54	54	Rc2	Rc2

砲金チーズ



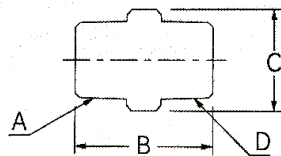
寸法	C	B	A	D
10	44	23	Rc3/8	Rc3/8
13	50	25	Rc1/2	Rc1/2
20	60	30	Rc3/4	Rc3/4
25	75	37.5	Rc1	Rc1
20×13	60	30	Rc1/2	Rc3/4
25×13	68	37	Rc1/2	Rc1
25×20	68	36	Rc3/4	Rc1
30	82	41	Rc1 1/4	Rc1 1/4
40	88	44	Rc1 1/2	Rc1 1/2
50	108	54	Rc2	Rc2

砲金ソケット



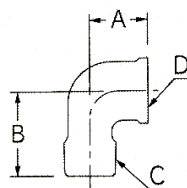
寸法	A	B	C
10	30	Rc3/8	Rc3/8
13	34.5	Rc1/2	Rc1/2
20	37	Rc3/4	Rc3/4
25	40	Rc1	Rc1
20×13	37	Rc3/4	Rc1/2
25×13	41	Rc1	Rc1/2
25×20	41	Rc1	Rc3/4
30	48	Rc1 1/4	Rc1 1/4
40	50	Rc1 1/2	Rc1 1/2
50	62	Rc2	Rc2

砲金ニップル



寸法	B	C	A	D
13	41	24	R1/2	R1/2
20	44	30	R3/4	R3/4
25	52	37	R1	R1
20×13	45	30	R3/4	R1/2
30	55	51	R1 1/4	R1 1/4
40	58	58	R1 1/2	R1 1/2
50	66	71	R2	R2

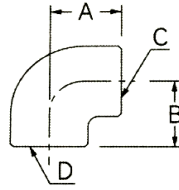
砲金ストリートエルボ



寸法	A	B	C	D
10	25	30	R3/8	Rc3/8
13	27	40	R1/2	Rc1/2
20	33	48	R3/4	Rc3/4
25	38	54	R1	Rc1



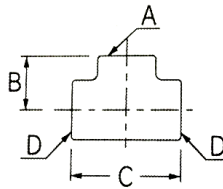
砲金エルボ(クローム)



寸法	A	B	C	D
13	25	25	Rc1/2	Rc1/2
20	30	30	Rc3/4	Rc3/4
25	38	38	Rc1	Rc1
20×13	29	30	Rc3/4	Rc1/2
25×13	32	32	Rc1	Rc1/2
25×20	35	35	Rc1	Rc3/4
30	41	41	Rc1 1/4	Rc1 1/4
40	44	44	Rc1 1/2	Rc1 1/2
50	54	54	Rc2	Rc2



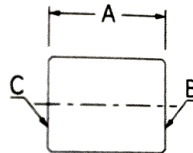
砲金チーズ(クローム)



寸法	C	B	A	D
13	50	25	Rc1/2	Rc1/2
20	60	30	Rc3/4	Rc3/4
25	75	37.5	Rc1	Rc1
20×13	60	30	Rc1/2	Rc3/4
25×13	68	37	Rc1/2	Rc1
25×20	68	36	Rc3/4	Rc1
30	82	41	Rc1 1/4	Rc1 1/4
40	88	44	Rc1 1/2	Rc1 1/2
50	108	54	Rc2	Rc2



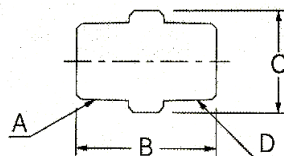
砲金ソケット(クローム)



寸法	A	B	C
13	34.5	Rc1/2	Rc1/2
20	37	Rc3/4	Rc3/4
25	40	Rc1	Rc1
20×13	37	Rc3/4	Rc1/2
25×13	41	Rc1	Rc1/2
25×20	41	Rc1	Rc3/4
30	48	Rc1 1/4	Rc1 1/4
40	50	Rc1 1/2	Rc1 1/2
50	62	Rc2	Rc2



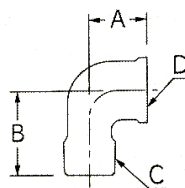
砲金ニップル(クローム)



寸法	B	C	A	D
13	41	24	R1/2	R1/2
20	44	30	R3/4	R3/4
25	52	37	R1	R1
20×13	45	30	R3/4	R1/2
30	55	51	R1 1/4	R1 1/4
40	58	58	R1 1/2	R1 1/2
50	66	71	R2	R2



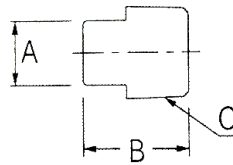
砲金ストリートエルボ(クローム)



寸法	A	B	C	D
13	27	40	R1/2	Rc1/2
20	33	48	R3/4	Rc3/4
25	38	54	R1	Rc1



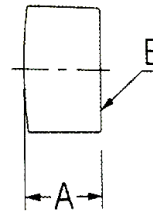
砲金プラグ



寸法	A	B	C
13	15	26	R1/2
20	17.5	29.5	R3/4
25	19	32.4	R1



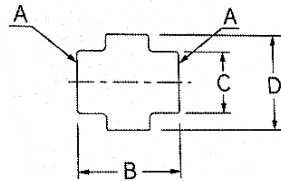
砲金キャップ



寸法	A	B
13	20	Rc1/2
20	23.6	Rc3/4
25	29.3	Rc1



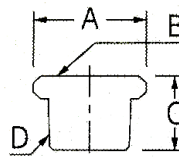
砲金ユニオン



寸法	B	C	D	A
13	41	27	42	Rc1/2
20	50	33	49	Rc3/4
25	59	41.3	58.6	Rc1



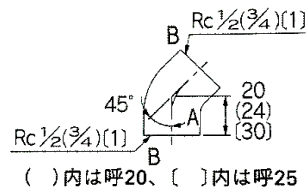
砲金ブッシング



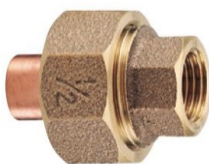
寸法	A	C	D	B
20×13	37	24	R3/4	Rc1/2
25×10	44	21	R1	Rc3/8
25×13	43.9	27.5	R1	Rc1/2
25×20	43.9	27.5	R1	Rc3/4



45° 砲金エルボ



寸法	A	B
13	20	Rc1/2
20	24	Rc3/4
25	30	Rc1

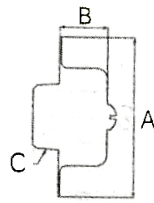


砲金絶縁ユニオン



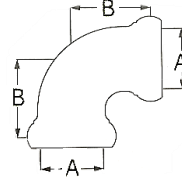
寸法	A	B	C
13	42.5	Rc1/2	15.88
20	52	Rc3/4	22.22
25	61	Rc1	28.58

公団型化粧プラグ



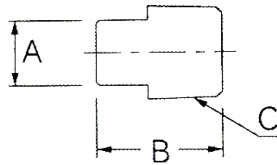
寸法	A	B	C
13	51	15	R1/2
20	51	15	R3/4

洗浄管エルボ(クロム)



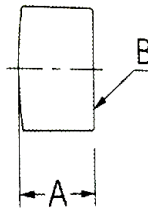
寸法	A	B
32	32	38

砲金プラグ(クロム)



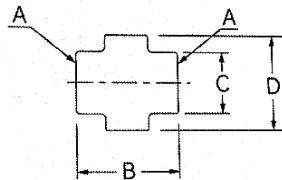
寸法	A	B	C
13	15	26	R1/2
20	17.5	29.5	R3/4
25	19	32.4	R1

砲金キャップ(クロム)



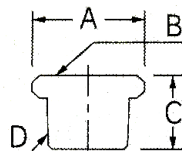
寸法	A	B
13	20	Rc1/2
20	23.6	Rc3/4
25	29.3	Rc1

砲金ユニオン(クロム)



寸法	B	C	D	A
13	41	27	42	Rc1/2
20	50	33	49	Rc3/4
25	59	41.3	58.6	Rc1

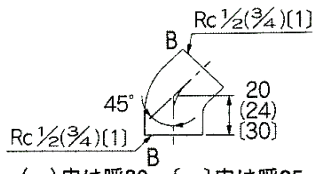
砲金プッシング(クロム)



寸法	A	C	D	B
20×13	37	24	R3/4	Rc1/2
25×13	43.9	27.5	R1	Rc1/2
25×20	43.9	27.5	R1	Rc3/4



45° 砲金エルボ(クロム)

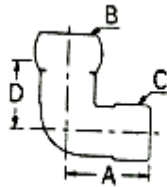


()内は呼20、[]内は呼25

寸法	A	B
13	20	Rc1/2
20	24	Rc3/4
25	30	Rc1



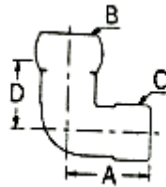
ナット付フレキエルボ(白付)



寸法	A	B	C	D
13	31	G1/2	G1/2	26
20	35	G3/4	G3/4	26.5
20×13	31	G3/4	G1/2	26



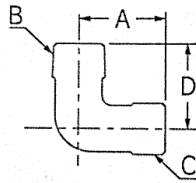
ナット付フレキエルボ(クロム)



寸法	A	B	C	D
13	32	G1/2	G1/2	26



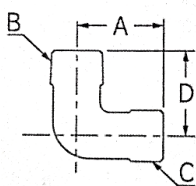
フレキエルボ(白付)



寸法	A	B	C	D
13	31	R1/2	G1/2	32.5
20	36	R3/4	G3/4	36
20×13	31	R3/4	G1/2	35

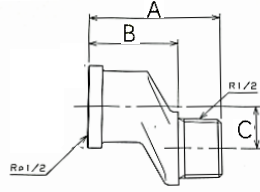


フレキエルボ(クロム)



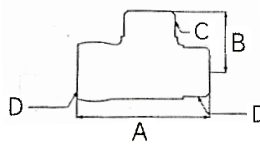
寸法	A	B	C	D
13	31	R1/2	G1/2	32.5

偏芯ザルボ



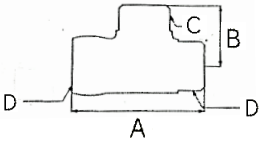
寸法	A	B	C
13×5	47	32	5
13×10	47	32	10
13×15	47	32	15
13×20	48	33	20
13×25	48	33	25
20×5	43	28	5
20×10	44	29	10
20×15	45	30	15
20×20	48	33	20
20×25	49.5	34.5	25
25×5	56	36	5
25×10	56	36	10
25×15	56	36	15
25×20	56	36	20
25×25	56	36	25

片ナットチーズ(白付)



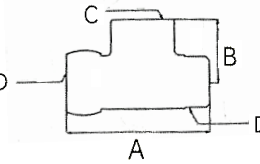
寸法	A	B	C	D
13	54	26	G1/2	G1/2

片ナットチーズ(クロム)



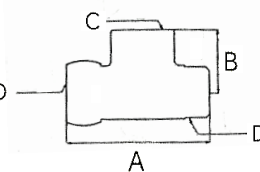
寸法	A	B	C	D
13	54	26	G1/2	G1/2

片ナットメスネジチーズ(白付)



寸法	A	B	C	D
13	58	25	Rc1/2	G1/2

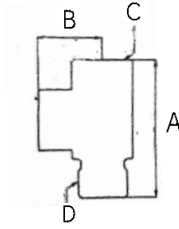
片ナットメスネジチーズ(クロム)



寸法	A	B	C	D
13	58	25	Rc1/2	G1/2



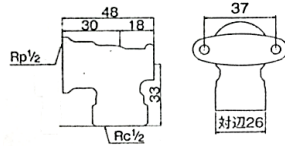
オスメスチーズ



寸法	A	B	C	D
13	59	27	Rc1/2	G1/2
20	66	32	Rc3/4	G3/4



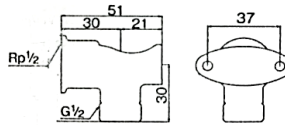
内ネジ座付水栓エルボ(白付)
内ネジ座付水栓エルボ



寸法
13



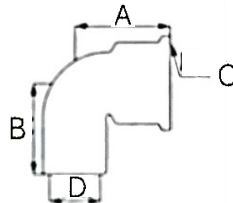
外ネジ座付水栓エルボ(白付)



寸法
13



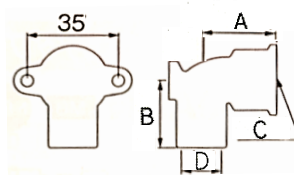
銅管用水栓エルボ



寸法	A	B	C	D(呼び)
13 × 15.88	31	27	Rp1/2	15.88
13 × 22.22	31	35	Rp3/4	22.22
20 × 22.22	37.4	38	Rp3/4	22.22



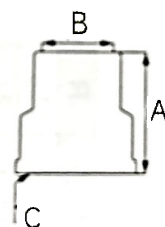
銅管用座付水栓エルボ



寸法	A	B	C	D(呼び)
13 × 15.88	31	27	Rp1/2	15.88



銅管用水栓ソケット



寸法	A	B(呼び)	C
13 × 15.88	36	15.88	Rp1/2
13 × 22.22	36	22.22	Rp3/4
20 × 22.22	43	22.22	Rp3/4